



# *Office of the State Treasurer*

Consolidated Treasury Accounts Structure (CTAS)

***March 25, 2014***

---

*Presented by:*

Rhen Cain – Director of Banking Services

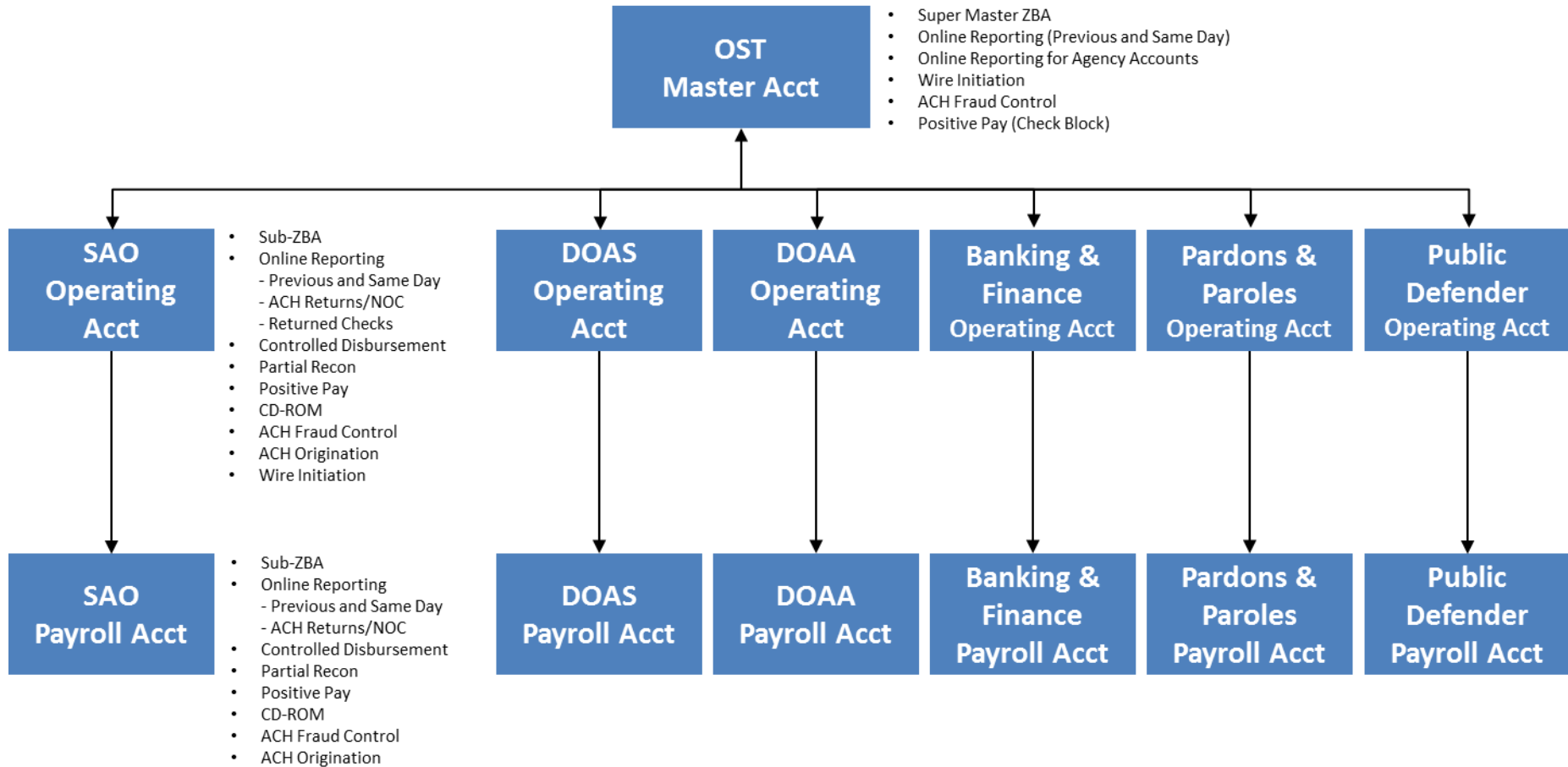


# Agenda

- Consolidated Treasury Accounts (CTAS)
- OST Banking Review
- Questions



# Consolidated Treasury Accounts Structure





# Consolidated Treasury Accounts Structure

- On February 3, 2014, SAO and OST converted the six Streamlined Banking entities to the Consolidated Treasury Accounts Structure
  - Entities include: DOAS, Audits, Banking & Finance, SAO, Pardons & Paroles, & Public Defenders Standards Council
- CTAS re-established each entity as a PeopleSoft business unit to operate day-to-day like traditional non-streamlined banking entities
- Daily functions include:
  - Maintenance of a state allotment account
  - Bank deposits
  - Utilizing bank proprietary system to initiate wires, view account activity, print check copies, initiate stop payments, etc.
  - Process ACH & check payments in PeopleSoft
  - Process inter-agency payments (GBA, GTA, FLEX) in OST's ARIS system
  - Remit state revenue collections using OST's ARIS system



# Consolidated Treasury Accounts Structure

- Currently there are existing cash balances in BFP accounts ranging from \$300 - \$600 million on a daily basis
- Enhancements to bank accounts to concentrate State's cash:
  - Controlled disbursement funding for payments
  - ZBA set-up (balances swept nightly to OST)
- This project allows the State to achieve the original objectives of SLB while maintaining existing bank relationships



# Consolidated Treasury Accounts Structure

- CTAS utilizes a ZBA structure which has been implemented for **operating** and **payroll** accounts
- CTAS accounts always have zero balances eliminating the need for funds to sit in bank accounts waiting for payments to clear
- Overall goals fulfilled through CTAS:
  - Concentrate the State's cash resources at OST
  - Improve liquidity
  - Facilitate reporting State's cash position
  - Increase investment earnings



# CTAS Fiduciary Accounts

- Fiduciary “agency cash” accounts established for each agency
  - The fiduciary account balance represents an agency’s “cash balance” and the funds available for clearing bank account disbursements
  - ZBA structure sweeps daily deposits made by an agency through its operating account to the agency fiduciary account at OST
  - An agency is required to transfer funds from its local depository or other Non-BFP accounts to its operating account for sweep to OST fiduciary account
  - Allotment funds are transferred directly to the agency fiduciary account. OST processes the allotment draw as a non-cash transfer of funds from OST to the agency fiduciary account
  - An agency uses ARIS to remit its revenue collection funds to OST. OST processes the revenue collection as a non-cash transfer of funds from the agency fiduciary account to OST
  - Daily controlled disbursements and electronic funds disbursements from the operating and payroll accounts decrease the balance of the agency fiduciary account
  - An agency uses ARIS to request inter-agency payments to GBA, GTA and FLEX. OST processes the payments as a non-cash transfer from the agency fiduciary account to the payee’s account at OST
  - Reports reflecting the fiduciary account activity are distributed to the agencies each day



# CTAS Fiduciary Accounts Sample

## Agency Fiduciary 101200\*

Debit		Credit	
112	CTAS Bank Deposit	212	CTAS Controlled Disbursement
103	Cash Receipt - Allotment Deposit	203	GBA Inter-agency Disbursement
		203	Revenue Remittance (ARIS)
<b>Ending Balance</b>		<b>Ending Balance</b>	

Debit		Credit	
	\$62,486.94		\$637.37
	\$94,114.37		\$1,840.00
			\$43,575.61
<b>\$156,601.31</b>		<b>\$46,052.98</b>	

**Agency Cash Available**

**\$110,548.33**

\* The difference between OST fiduciary balance and agency book balance should be outstanding checks.





# Sample Report - Allotment Statement

Office of the State Treasurer

*Allotment Statement (A)*

Activity 2/01/14 through 2/28/14

LEDGER-R	EFFECTIV	TRAN	TXN-DESCRIPTION	SOURCE-DOC	GRANT-ID	INCREASE	DECREASE	BALANCE
<b>BEGINNING BALANCE:</b>								
140290	2/3/2014	301	ALLOTMENT DISTRIBUT	WARRANT		412,596.00		
319285	2/4/2014	201	CASH ALLOTMENT DRAW	CTAS DRAW		0.00	63,510.00	
140153	2/5/2014	201	CASH ALLOTMENT DRAW	STATE TAX		373,762.65		
319519	2/5/2014	207	GFT - INCOME TAX	CTASSTATET		0.00	373,762.65	
319285	2/7/2014	201	CASH ALLOTMENT DRAW	CTAS DRAW		0.00	7,313.64	
319285	2/11/2014	201	CASH ALLOTMENT DRAW	CTAS DRAW		0.00	1,457.17	
319285	2/12/2014	201	CASH ALLOTMENT DRAW	CTAS DRAW		0.00	94,114.37	
140153	2/14/2014	201	CASH ALLOTMENT DRAW	CTASSTATET		358,787.37		
319519	2/14/2014	207	GFT - INCOME TAX	CTASSTATET		0.00	358,787.37	
319285	2/17/2014	201	CASH ALLOTMENT DRAW	CTAS DRAW		0.00	1,784.01	
319285	2/18/2014	201	CASH ALLOTMENT DRAW	CTAS DRAW		0.00	7,375.72	
319285	2/19/2014	201	CASH ALLOTMENT DRAW	CTAS DRAW		0.00	998.21	
319285	2/20/2014	201	CASH ALLOTMENT DRAW	CTAS DRAW		0.00	188,741.46	
319285	2/21/2014	201	CASH ALLOTMENT DRAW	CTAS DRAW		0.00	21,035.71	
319285	2/24/2014	201	CASH ALLOTMENT DRAW	CTAS DRAW		0.00	59.87	
319285	2/26/2014	201	CASH ALLOTMENT DRAW	CTAS DRAW		0.00	45,490.40	
319285	2/27/2014	201	CASH ALLOTMENT DRAW	CTAS DRAW		0.00	90,813.03	
140153	2/28/2014	202	NON-CASH ALLOTMENT	TRANSFER		181,539.98		
140153	2/28/2014	201	CASH ALLOTMENT DRAW	CTASSTATET		370,669.26		
319285	2/28/2014	201	CASH ALLOTMENT DRAW	CTAS DRAW		0.00	16,049.99	
319285	2/28/2014	201	CASH ALLOTMENT DRAW	CTAS PRDRA		0.00	55,392.40	
319519	2/28/2014	207	GFT - INCOME TAX	CTASSTATET		0.00	370,669.26	

**TOTAL FOR FUND:**

**1,697,355.26 1,697,355.26**



# Sample Report - Fiduciary Statement

## Office of the State Treasurer

### *Fiduciary Statement (Z)*

Activity 2/01/14 through 2/28/14

EFFECTIV	TRAN	REV-CODE	TXN-DESCRIPTION	SOURCE-DOC	GRANT-ID	DEBITS	CREDITS	BALANCE
<b>BEGINNING BALANCE:</b>								
2/4/2014	0103	00006050	CASH RECEIPTS- FID	CTAS DEP		63,510.00		
2/4/2014	0112	00006050	CTAS DEPOSITS	CTAS DEP	020414	62,486.94		
2/5/2014	0203	00006001	CASH DISBURSEMENTS	STATE TAX			373,762.65	
2/5/2014	0112	00006050	CTAS DEPOSITS	CTAS DEPOS	020514	163,550.70		
2/5/2014	0112	00006050	CTAS DEPOSITS	CTAS DEPOS	020414	380.00		
2/5/2014	0212	00000000	CTAS DISBURSEMENTS	CTAS DISB			434,023.07	
2/6/2014	0203	00006001	CASH DISBURSEMENTS	CTAS-GBA			1,880.00	
2/6/2014	0203	00006001	CASH DISBURSEMENTS	CTAS-FLEX			17,821.56	
2/6/2014	0112	00006050	CTAS DEPOSITS	CTAS DEP	020514	1,334.82		
2/7/2014	0103	00006050	CASH RECEIPTS- FID	CTAS DEP		7,313.64		
2/7/2014	0112	00006050	CTAS DEPOSITS	CTAS DEP	020614	1,258,373.32		
2/7/2014	0212	00006050	CTAS DISBURSEMENTS	CTAS DISB	020614		637.37	
2/10/2014	0212	00006050	CTAS DISBURSEMENTS	CTAS DISB			1,391.05	
2/10/2014	0112	00006050	CTAS DEPOSITS	CTAS DEP	020714	918,439.11		
2/11/2014	0103	00006050	CASH RECEIPTS- FID	CTAS DEP		1,457.17		
2/11/2014	0112	00006050	CTAS DEPOSITS	CTAS DEP	021014	222,872.04		
2/11/2014	0212	00006050	CTAS DISBURSEMENTS	CTAS DISB			1,634.21	
2/12/2014	0103	00006050	CASH RECEIPTS- FID	CTASDEP		94,114.37		
2/12/2014	0212	00006050	CTAS DISBURSEMENTS	CTAS DISB			105.00	
2/12/2014	0112	00006050	CTAS DEPOSITS	CTAS DEP	021114	43,725.16		
2/13/2014	0112	00006050	CTAS DEPOSITS	CTAS DEP	021214	147,202.47		
2/14/2014	0203	00006001	CASH DISBURSEMENTS	CTASSTATET			358,787.37	



# Sample Report - Fiduciary Statement

## Office of the State Treasurer

### *Fiduciary Statement (Z)*

Activity 2/01/14 through 2/28/14

EFFECTIV	TRAN	REV-CODE	TXN-DESCRIPTION	SOURCE-DOC	GRANT-ID	DEBITS	CREDITS	BALANCE
2/14/2014	0203	00006001	CASH DISBURSEMENTS	CTAS-FLEX			3,107.90	
2/14/2014	0212	00006050	CTAS DISBURSEMENTS	CTAS DISB			220,669.73	
2/14/2014	0212	00006050	CTAS DISBURSEMENTS	CTAS DISB			855.56	
2/14/2014	0112	00006050	CTAS DEPOSITS	CTAS DEP	021314	604,255.74		
2/17/2014	0103	00006050	CASH RECEIPTS- FID	CTAS DEP		1,784.01		
2/18/2014	0103	00006050	CASH RECEIPTS- FID	CTAS DEP		7,375.72		
2/18/2014	0212	00006050	CTAS DISBURSEMENTS	CTAS DISB			33,166.78	
2/18/2014	0112	00006050	CTAS DEPOSITS	CTAS DEP	021414	871,348.27		
2/19/2014	0103	00006050	CASH RECEIPTS- FID	CTAS DEP		998.21		
2/19/2014	0203	00006001	CASH DISBURSEMENTS	REV COLL			43,575.61	
2/19/2014	0212	00006050	CTAS DISBURSEMENTS	CTAS DISB			52,249.15	
2/19/2014	0112	00006050	CTAS DEPOSITS	CTAS DEP	021814	240,545.30		
2/20/2014	0103	00006050	CASH RECEIPTS- FID	CTAS DEP		188,741.46		
2/20/2014	0212	00006050	CTAS DISBURSEMENTS	CTAS DISB			3,076.20	
2/20/2014	0112	00006050	CTAS DEPOSITS	CTAS DEPOS	021914	663,916.16		
2/21/2014	0103	00006050	CASH RECEIPTS- FID	CTAS DEP		21,035.71		
2/21/2014	0212	00006050	CTAS DISBURSEMENTS	CTAS DISB			17,038.76	
2/21/2014	0112	00006050	CTAS DEPOSITS	CTAS DEP	022014	161,910.88		
2/24/2014	0103	00006050	CASH RECEIPTS- FID	CTAS DEP		59.87		
2/24/2014	0212	00006050	CTAS DISBURSEMENTS	CTAS DISB			26,190.16	
2/24/2014	0112	00006050	CTAS DEPOSITS	CTAS DEP	022114	216,669.85		
2/25/2014	0212	00006050	CTAS DISBURSEMENTS	CTAS DISB			105.00	
2/25/2014	0112	00006050	CTAS DEPOSITS	CTAS DEP	022414	244,651.01		
2/26/2014	0103	00006050	CASH RECEIPTS- FID	CTAS DEP		45,490.40		



# Sample Report - Fiduciary Statement

Office of the State Treasurer

*Fiduciary Statement (Z)*

Activity 2/01/14 through 2/28/14

EFFECTIV	TRAN	REV-CODE	TXN-DESCRIPTION	SOURCE-DOC	GRANT-ID	DEBITS	CREDITS	BALANCE
2/26/2014	0212	00006050	CTAS DISBURSEMENTS	CTAS DISB			2,571,036.36	
2/26/2014	0112	00006050	CTAS DEPOSITS	CTAS DEP	022514	471,516.57		
2/27/2014	0103	00006050	CASH RECEIPTS- FID	CTAS DEPOS		90,813.03		
2/27/2014	0212	00006050	CTAS DISBURSEMENTS	CTAS DISB			388,344.71	
2/27/2014	0112	00006050	CTAS DEPOSITS	CTAS DEP	022614	69,571.25		
2/28/2014	0203	00006001	CASH DISBURSEMENTS	CTASSTATET			370,669.26	
2/28/2014	0203	00006001	CASH DISBURSEMENTS	CTAS-FLEX			17,390.89	
2/28/2014	0203	00006001	CASH DISBURSEMENTS	CTAS-GBA			1,840.00	
2/28/2014	0103	00006050	CASH RECEIPTS- FID	CTAS DEP		16,049.99		
2/28/2014	0103	00006050	CASH RECEIPTS- FID	CTAS PR DE		55,392.40		
2/28/2014	0212	00006050	CTAS DISBURSEMENTS	CTAS DISB			2,330,567.60	
2/28/2014	0112	00006050	CTAS DEPOSITS	CTAS DEP	022714	2,467,420.62		

**TOTAL FOR FUND:**

**9,424,306.19 7,269,925.95**

**ENDING-BALANCE: 2,154,380.24**



# OST Banking Overview

## STATE BANK FEE PROGRAM

- OST's banking group performs banking reviews in accordance with the State's Bank Fee Policy
- Bank Fee Policy is set by the State Depository Board
- Bank Fee Program (BFP) Banks
  - There are 13 banks participating in BFP program: Bank of America, BB&T, CertusBank, Citibank, Citizens Trust, Fifth Third, JP Morgan Chase, PNC, Regions, SunTrust, Synovus, U.S. Bank, and Wells Fargo
  - Seven of these banks currently have BFP accounts: Bank of America, BB&T, JP Morgan Chase, Regions, SunTrust, Synovus, and Wells Fargo





# Consolidated Treasury Accounts Structure

**Questions?**