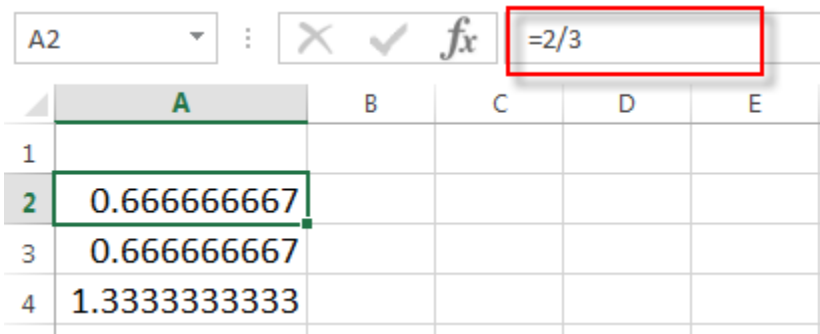





**Using Microsoft Excel's Precision as Displayed**  
**By Tracy Arner**  
**Financial Program Training Manager, Carl Vinson Institute of Government**

We all have experienced the frustration of rounding errors when entering transactions into Excel. An example of this appears below –

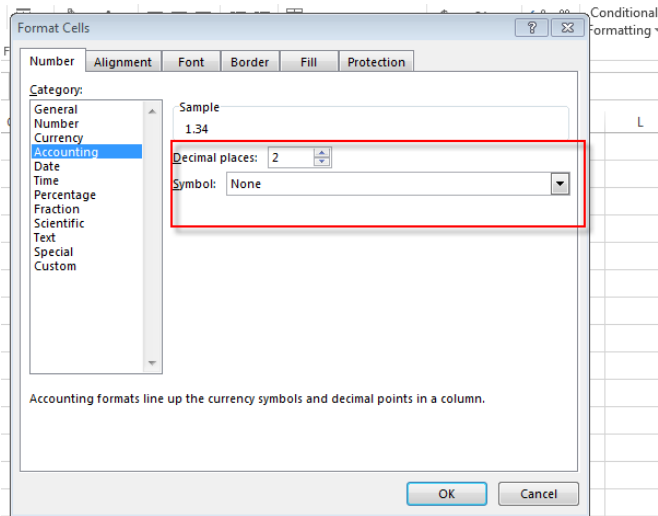
|  |      |  |
|--|------|--|
|  | 0.67 |  |
|  | 0.67 |  |
|  | 1.33 |  |

Obviously, 0.67 plus 0.67 is 1.34, not 1.33. When Excel is calculating a formula, the program looks at the exact contents of the cell rather than the amount displayed according to the number of decimal places formatted. In the example below, the formula in cells A2 and A3 is =2/3. The result is as follows -

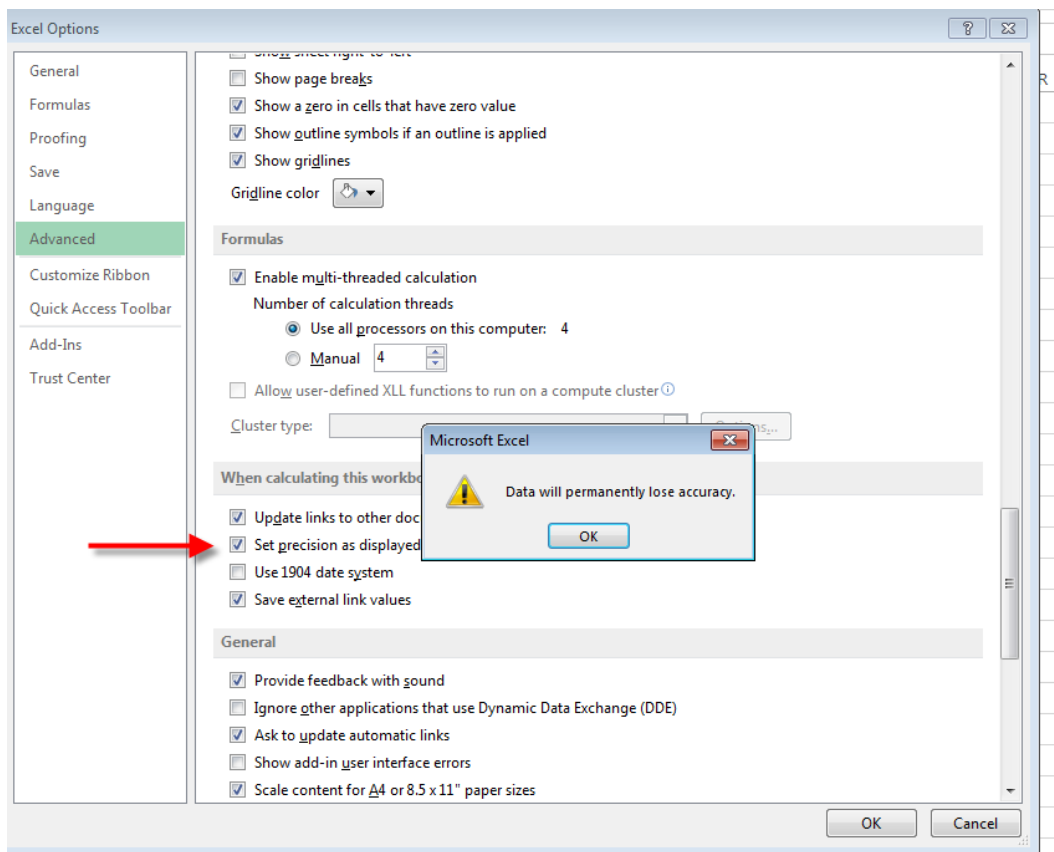


|    |             |   |   |   |      |
|----|-------------|---|---|---|------|
| A2 | :           |  |  |  | =2/3 |
|    | A           | B   | C   | D   | E    |
| 1  |             |   |   |   |      |
| 2  | 0.666666667 |   |   |   |      |
| 3  | 0.666666667 |   |   |   |      |
| 4  | 1.333333333 |   |   |   |      |

Based on the cell contents, the 1.33 calculated in the above example is correct. However, users of Excel typically will expect the result of a formula to represent the amounts displayed in the spreadsheet based on the number of decimal places formatted as shown below-



Excel has an option called “Precision as Displayed” to assist with this issue. To select “Precision as Displayed” for your worksheet, do the following – File>Options>Advanced>Set Precision as Displayed. This will result in the following message -



Don't be alarmed by the "Data will permanently lose accuracy" message. This just means that the formula result will be calculated using the numbers as formatted rather than the amount stored in the Excel cell that is not visible to the user. Selecting this option will result in the following –

|  |      |  |
|--|------|--|
|  | 0.67 |  |
|  | 0.67 |  |
|  | 1.34 |  |
|  |      |  |

Precision as displayed will result in accuracy according to amounts displayed which is always important when preparing budget and other financial documents.